

ABOYTES MFG.

Abrasive Blasting Equipment & Dust Collectors

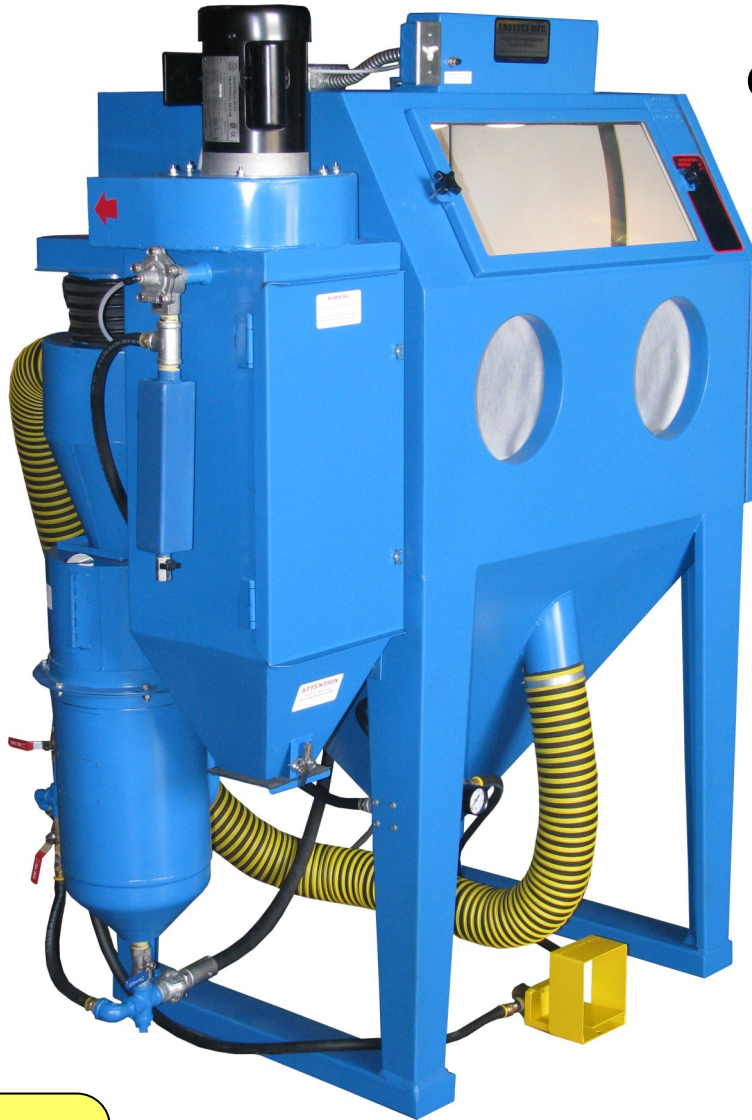
**Made In The
U.S.A.**

Dry Hone Pressure Abrasive Blasting Cabinet System

Used in
applications such as:

- **Cleaning**
 - Precision parts
 - Semiconductor parts
 - Metal castings
- **Preparing**
 - Surface for Painting
 - Plating
- **Removing**
 - Heat treated Scales
 - Carbon Deposits
 - Oxides
 - Paint
- **Finishing**
 - Automotive
 - Arts and Crafts
 - Decorating
 - Etching
 - Glass
 - Removal of Scale

And many more.....



No Rivets
No Spot Welds
No Caulking Unions
No Shop/Barrel Vacuum
 Dust Collector

Quality Built Abrasive
Blasting Systems

For High Production
or
Occasional projects

- **Cyclone Vortex Reclaim System**
is designed to keep abrasive media free of contaminants while minimizing media waste.
- **Direct Pressure Blasting**
Designed for Aggressive or gentle abrasive blasting
- **Heavy-Duty** Blasting gun assembly and foot control valve.
- **Cartridge Type Dust Collector**
1/2 hp. Motor & Powerful air blower for clear visibility while blasting and no mess.
- **Filtration Area:** 54 sq. Ft.
- **Push-Button** Filter cartridge cleaning reverse flow valve.

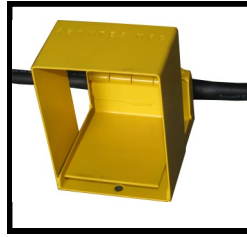
MODEL: ADHP 36 - C

WWW.ABOYTESMFG.COM

ABOYTES MFG. ADHP 36 - C Series



Clear visibility while blasting at all times



High flow foot control valve & Safety guard



Powerful reverse flow blow-down system to clean filter Cartridge

Aboytes Mfg. 36-C Series Features :

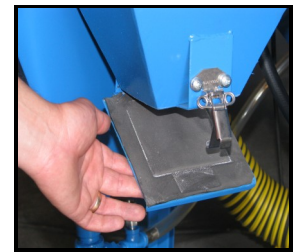
- Fabricated with 14 gauge hot rolled steel , continuously welded
- Right side loading on standard models
- Full size door opening with abrasive spill proof
- Large window viewing area 25" X 11"
- Exterior laminate automobile safety glass
- Regular inside glass, easy to replace with safety clips
- High flow air regulator and valves
- Electrical toggle switch to control lights and motor
- Cartridge type dust control system w/ pneumatic reverse flow pulsing valve.

Heavy-Duty:

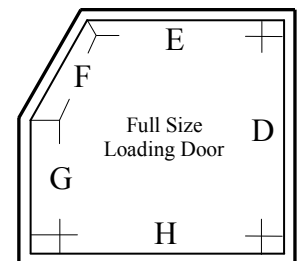
- Full length neoprene gloves and sleeves
- Brass foot control and safety guard
- Blasting gun assembly
- Expanded metal work bench

Dry Hone Pressure:

- 5X'S faster blasting process
- Vortex Reclaimer System
- 40 lb. capacity abrasive pressure pot
- Light weight media (medium to fine)



Quick waste removal lid on Dust Collector



Model	Work Area Dimensions	Floor Dimensions	Door Opening Right Side	Work Stations	Abrasive Pressure Pot Vessel	Spot Lights	Dust Collector	Motor	Dust Collector CFM	Electrical	Filter	Shipping
ADHP 36	W 36" D 30" H 30"	W: 58" D: 31" H: 75"	D:27.5" E:21.5" F:13" G:16.5" H:28"	1	40 lb. Abrasive Capacity	2	Cartridge Series	1/2 hp. 115/230 1 phase	450	1 phase 110 voltage 1 switch controls Lights/motor	54	*
ADHP 48 30	W 48" D 30" H 30"	W: 70" D: 31" H: 75"	D:27.5" E:21.5" F:13" G:16.5" H:28"	1	40 lb. Abrasive Capacity	4	Cartridge Series	1/2 hp. 115/230 1 phase	450	1 phase 110 voltage 1 switch controls Lights/motor	54	*

Direct Pressure Air Consumption

NOZZLE ORIFICE	Cubic Ft. Per Minute						
	40 PSI	50 PSI	60 PSI	70 PSI	80 PSI	90 PSI	100 PSI
3/16"	22	25	30	35	40	43	45
1/4"	40	50	55	60	70	75	80
5/16"	70	80	90	100	115	125	140
3/8"	105	110	125	145	160	175	200
1/2"	195	200	225	250	275	300	340

This table is to be used as reference only.

Distributed By: